

CDM 2015:

to,

CDM2020 ????

**Newcastle
Construction
Safety Group**

**Friday 29th
March**

2019



CDM 2015

Good / Bad / Worked / Not Worked

Lazy Underbelly - RAMS

Solutions / Improvements



Client (could be Domestic or Business)



Managing health and safety in construction

Construction (Design and Management) Regulations 2015



Law

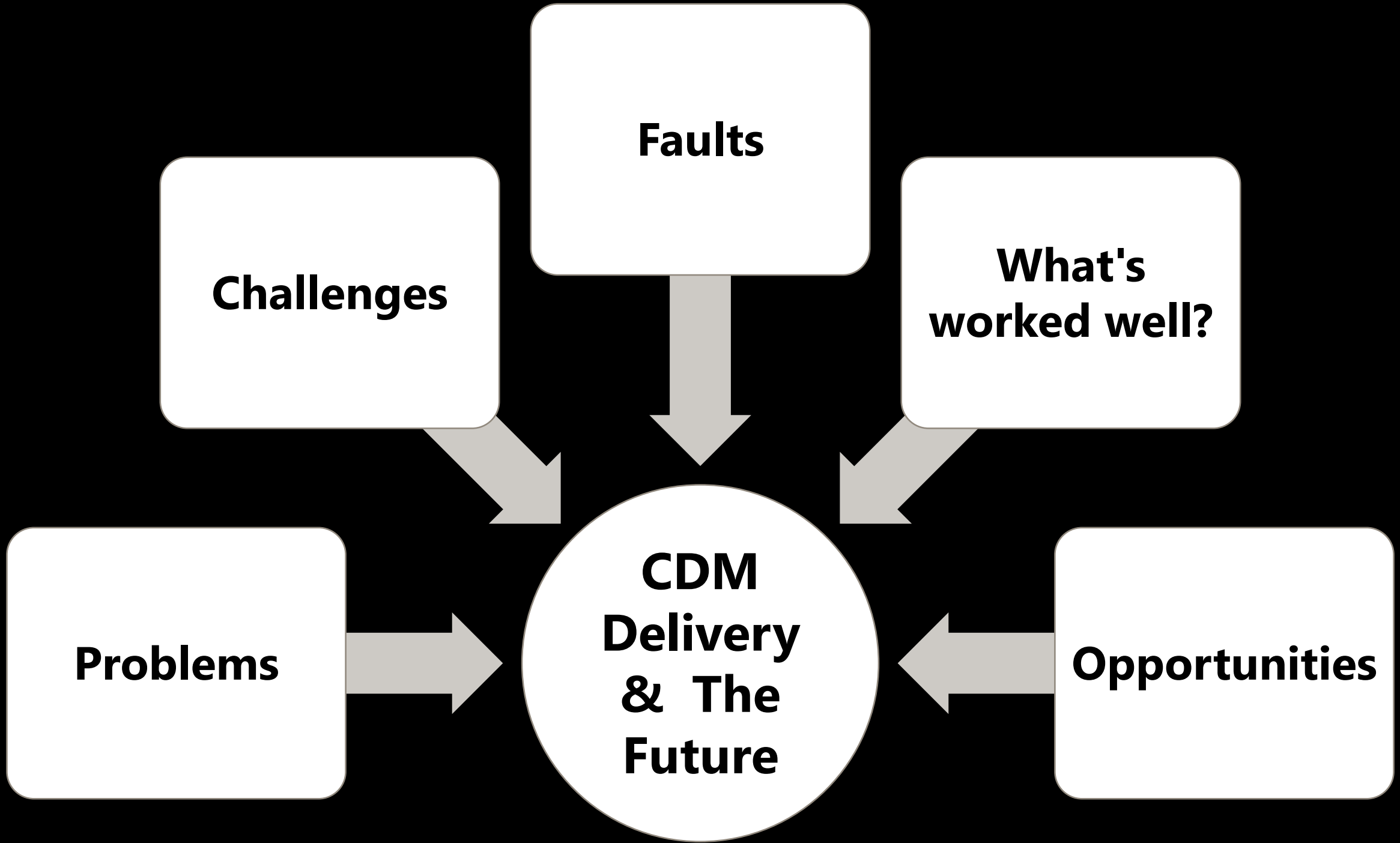


**Applies to all
Construction
work**

Describes



**Duty holders
must or
should do!**



In our (me and Summers-Inman) experience – CDM fails when:-

Lack of communication and coordination

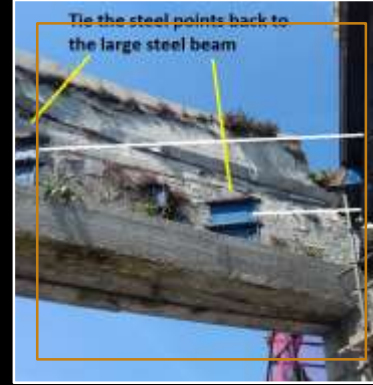
Lack of clarity over responsibility / accountability

Lack of CDM in change control process

CDM is separate and not integral part of business / approach

Principal designer appointed late

Lazy underbelly – RAMS & duty holders

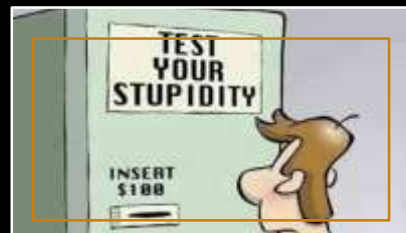


Pressure

Ignorance



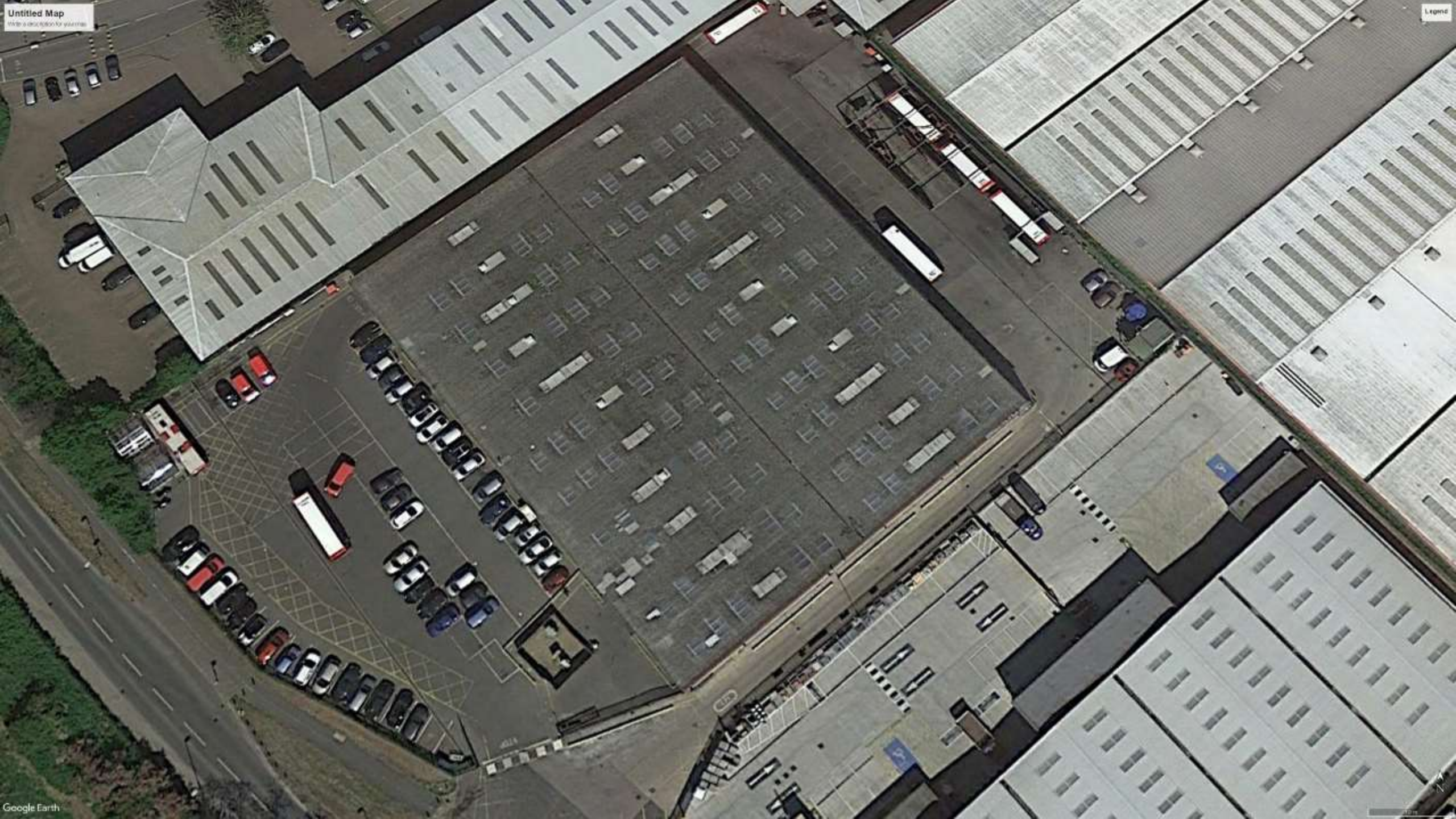
Copy and Paste



Incompetence



Resources



Method Statement

**“Remove and
replace
rooflights”**



Construction Phase Plan

- All scaffolding and staircases to be modified to Summers Inman recommendations.
- Toe boards to be fitted to handrail at both eaves.
- Extra fittings to handrail standards to ensure stability.
- No gaps greater than 470mm to all of the above.
- Nets fitted to every accessible area as an extra precaution.
- Harnesses to be worn at all times when on roof, clipped onto handrail.
- Scissor lift to be permanently on site for loading/unloading and for rescue plan.
- Area below works to be cordoned off so as any bolts falling cannot land on anyone, larger items will be trapped in the nets.
- Any items that cannot be safely removed will be left in the nets and removed when the nets are dismantled.
- Any asbestos items will be double bagged and removed from site by [REDACTED] and disposed of at a licensed waste disposal site.
- [REDACTED] are licenced waste carriers with the Environment Agency
- Weekly visits will be made by [REDACTED] management to ensure smooth and safe progress of work.
- Weekly meeting to be arranged with [REDACTED] management to agree area of works for the week and revised as and when necessary to suit both parties by having a brief meeting each morning as work progresses.
- Copies of all relevant qualifications, C.S.C.S etc., will be provided before works commence when operatives names will be confirmed.
- Evidence of operatives competence/experience to be provided before works commence
- Operatives to visually inspect scaffold each day and keep a written record.
- Scaffolders to visit site weekly to sign off as per H.S.E guidelines.
- The rooflights to be fitted are Class 1 fire rated to meet current building regulations but are not non fragile as the complete roof is fragile and therefore nowhere should be walked on without sufficient stagings to spread the load.

Risk Assessment

- 16 pages –
Genericness –
including
excavations and
shoring but no
WAH rescue plan!

METHOD STATEMENT

1 of 2

Date: 14 March 2019

Contractor:

Contact:

Project: - Window Repairs

Supervisor/Foreman:

Employees expected on site: 4

Introduction

As is general practice within the company most repairs, refurbishment and building work will be carried out by its own employees. Should external contractors be required they will have been checked for competency. They will be asked to provide a copy of their Health and Safety Policy Statements (if applicable), appropriate Risk Assessments/Method Statements and relevant insurance cover. They may also be asked to demonstrate their ability to carry out any such work.

Scope of Works;

Repairs and decoration of box sash windows

Consultation will have been made with any secondary contractor's where necessary, with an agreement to follow any site instructions.

recognises and accepts its responsibility as an employer for providing a safe and working environment for all its employees.

The company will take all steps within its power to meet this responsibility, paying particular attention to the provision and maintenance of:-

- Plant, equipment and systems of work that is safe
- Safe arrangements for the use, handling, storage and transport of articles and substances
- A healthy working environment
- A safe place of work and safe access
- Warning signage to in be place

Our work on site will commence on

2 of 2

Health and Safety and Associated Risks;

Specific Hazards –

Working at Height

Hazardous Operations;

Risk Assessments provided for;

Working at Heights

Manual Handling

Power tools

Painting

All plant and equipment used will be checked prior to use and any training required will be given. All portable appliances will conform to current Portable Appliance Testing standards.

Protective and safety equipment for our operatives use has been issued and signed for by all our employees in accordance with the requirements under the PPE Regulation.

Safety clothing and footwear to be worn at all times

Goggles to be used when there is any chance of material entering into the eyes

Gloves and dust masks

All debris resulting from our work will be cleared up on a nightly basis, bagged and removed from site to skips

Power tools to be checked prior to use

Manual handling tool box talk to be adhered to

Ensure appropriate COSHH sheets adhered to

Signed

For and on behalf of;

Dated 14 March 2019

5. Specific Legislation/Guidance

The following has been utilised in preparing this assessment:

- Reporting of Injuries, Diseases and Dangerous Occurrences Regulations 2013 (RIDDOR)
- Health & Safety Act – Current Amended 2013
- Health and Safety at Work etc. Act 1974 - Current Amended 2013
- HSE Regulations 2007 – Approved Code of Practice L144
- Health & Safety Enforcement Authority Regulations 1998
- The Health & Safety Law for Employees Regulations 2012
- The Employers' Liability (Compulsory Insurance) Act 1969
- The Health & Safety (First Aid) Regulations 2011
- Construction (Design Management Regulations) 2007
- Construction (Health Safety & Welfare) Regulations 2007
- Health & Safety in Construction HSG 150
- Health & Safety Control of Asbestos Regulations 2012
- Health & Safety General Product Safety Regulations 1994
- Managing for Health & Safety HSG65
- Noise at Work Regulations 2008
- Manual Handling Operations Regulations 1992
- The Personal Protective Equipment at Work Regulations 1992
- The Provision and Use of Work Equipment Regulations 1998
- Building Regulations
- Working At Height Regulations 2005/2007 (As Amended)
- Control of Substances Hazardous to Health Regulations 2002 – Sixth Edition

6. Additional assessments required

7. Implementation & Monitoring

This assessment has been prepared by [REDACTED]

This assessment and safe system of work has been made specific for this particular project by

Name [REDACTED] Position: Director Date 14.3.19

The implementation and monitoring of this assessment during this project shall be undertaken by Site Supervisor



RISK ASSESSMENT

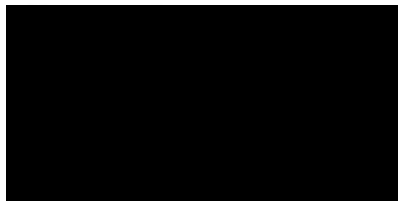
Description of Task:		Location of Task:		Front Elevation	
Scaffold Erection and Dismantling				Page: 1 of 13	

Hazardous Agents	Significant Risk?	Critical Activities	Significant Risks?	Hazardous Consequences	Significant Risks?
Oxidants		Work at Height	✓	Environmental Discharge	
Inert Gas		Work over Water	✓	Fire/Explosion	
Flammable Gas/Vapour		Manual Handling	✓	Primary Structural Damage	
Toxic Gas/Chemicals/Vapour		Mechanical Lifting (vehicles, cranes)		Secondary Structural Damage	
Corrosives		Lifting Equipment		Loss of Stability	
Other Hazardous Chemicals		Machinery (moving parts, ejection)		Damage to Equipment	
Fuel Oil		Power Tools		Injury to Personnel	✓
Lubricant Oil		Hand Tools	✓	Fatal Injury	✓
Biological Agents		Welding / Cutting		Asphyxiation	
Noise		Water Jetting / Grit Blasting		Drowning	
Vibration		Excavation		Skin Sensitisation	
Electrical Energy		Confined Space Entry	✓	Corrosive Injury	
Static Electricity		Process Isolation		Toxic Effect	
Radiation		Electrical Isolation		Radiation Overdose	
Temperature / Ventilation		Work on Safety Systems		Electric Shock	
Pressure		Breaking Containment			
Illumination	✓	Pressure/Leak Testing			

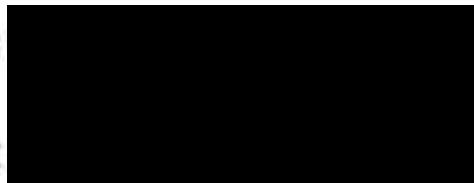
11. METHOD STATEMENT APPROVED FOR USE BY RELEVANT MANAGER/SUPERVISOR:

Date: 17-02-2019

Prepared By:

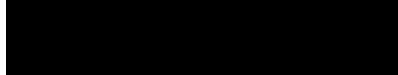


Position:

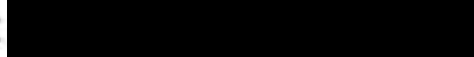


Signature:

Checked By:



Position:



Signature:

12. METHOD STATEMENT REVIEW:

.....
Name

.....
Signature

.....
Date

.....

.....

.....

School asbestos fine: Failures lead to over £100,000 in fines

The company appointed a subcontractor to remove the suspended ceilings on its behalf but provided only **a generic risk assessment and method statement** which failed to identify important information, including the asbestos risk.

Worker fractured spine in roof fall on construction site

The [HSE](#)'s investigation revealed that, **while a risk assessment and method statement were in place to remove the roof sheets from below, this method was then changed** to remove them from above. It was during this process that the employee fell through a roof sheet.

Suspended sentence for rope access boss

The HSE's investigation found that the person put in charge of planning and supervising the work had never worked on a fragile roof before. **It was also found that the method statement prepared was inadequate** as rope access is generally not suitable for use on fragile roofs.

Over £2m in fines after worker breaks leg in trench

After the accident, John Henry & Sons (Civil Engineers) Ltd, **backdated the method statement to give the impression that it was signed** by the workers prior to the trench collapsing

Sentence after worker injured at prison

An investigation by the Health and Safety Executive (HSE) into the incident found that Longcross Construction Limited, Fewell Engineering and SJT Site Management Limited, **all failed to prepare suitable and sufficient Risk assessments and method statements** for the operation.

£200k fine for Glasgow construction firm following fatality

Morris & Spottiswood Ltd had **failed to review the risk assessments and method statements** submitted by the steelwork sub-contractor for the task and had failed to establish and maintain an exclusion zone around the steelwork while erection was being carried out

Firms ordered to pay over £400k after road worker loses arm

HSE's investigation revealed a series of safety failings on the part of all three companies, including:
the risk assessment described a different type of chip spreader than the one used on site;

Site manager and safety consultant jailed after labourer's death

The HSE said that:

- the **method statement** included information that was **copied and pasted** from a document relating to a previous basement job undertaken by SIDAY;
- the method statement was prepared without reference to any temporary works engineer drawings or schemes in relation to the propping and shoring temporary works that would be needed on site. This was to be added by SIDAY at a later date according to the method statement – but this did not happen. The method statement was therefore inadequate;

Thank
you



**Aps Survey
link on future
of CDM**

<https://www.surveymonkey.co.uk/r/J9VSLT2>